

Approvals & Disclaimer



The information contained herein is offered in good faith and is believed to be accurate. However, because conditions and methods of use of our products are beyond our control, this information should not be used in substitution for customer's tests to ensure that Chroma-Q products are safe, effective, and fully satisfactory for the intended end use. Suggestions of use shall not be taken as inducements to infringe any patent. Chroma-Q sole warranty is that the product will meet the Chroma-Q sales specifications in effect at the time of shipment. Your exclusive remedy for breach of such warranty is limited to refund of purchase price or replacement of any product shown to be other than as warranted.

Chroma-Q reserves the right to change or make alteration to devices and their functionality without notice due to on-going research and development.

The Chroma-Q Cascade has been designed specifically for the professional entertainment lighting industry. Regular maintenance should be performed to ensure that the products perform well in the entertainment environment.

If you experience any difficulties with any Chroma-Q products please contact your selling dealer. If your selling dealer is unable to help please contact support@chroma-q.com. If the selling dealer is unable to satisfy your servicing needs, please contact the following for full factory service:

Outside North America:

Tel: +44 (0)1494 446000
Fax: +44 (0)1494 461024
support@chroma-q.com

North America:

Tel: +1 416-255-9494
Fax: +1 416-255-3514
support@chroma-q.com

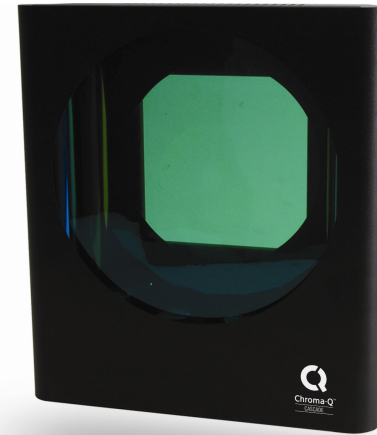
For further information please visit the Chroma-Q website at www.chroma-q.com.

Chroma-Q is a trademark, for more information on this visit www.chroma-q.com/trademarks.

The rights and ownership of all trademarks are recognised.

Quick Start Guide

Cascade™



For a full product manual please visit www.chroma-q.com

1. Product Description

The Chroma-Q Cascade is a colour changer that provides up to 300 colours using subtractive colour mixing method by combining two gel strings containing secondary colours. The unit is supplied with two sets of pre-installed gel strings, and compatible with lighting fixtures of up to 178mm / 7" lens aperture with variable mounting plates.

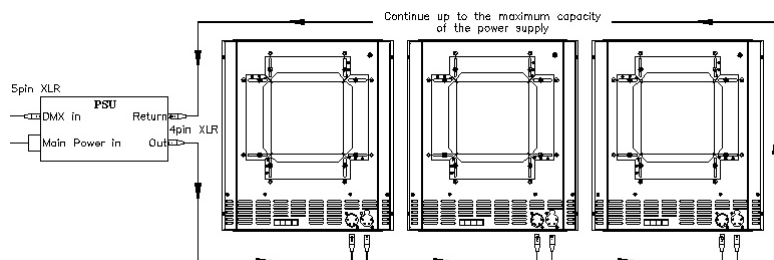
The secondary (subtractive) colours are Cyan, Magenta & Yellow. Hundreds of different colours are achieved within one unit by mixing two of the basic subtractive filters at different saturations. The primary (additive) colours (Red, Green & Blue) have been added to the rear of gel string.

Note: The quantity of Chroma-Q Cascade is dependent on the size of PSU/Splitter.

2. Operation

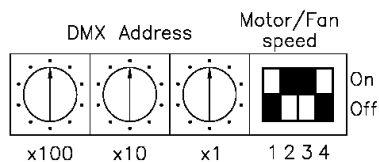
Control and Power Cables:

Connect power and control data from the power supply unit through the XLR 4-pin cable system. Pins 2 and 3 are for ANSI E1.11 USITT DMX 512-A control protocol. Pins 1(-) and 4(+) are for 24V DC power. For daisy chaining, the XLR-4 cable should be run from the output connector on the unit to the next device in the chain. Total cable length must not exceed more than 60m (~200ft.) with return line. Signal input is a male XLR chassis connector and output is a female XLR chassis connector.



Setting the DMX Address:

The DMX address is set using the three rotary switches on the back of the unit. The number of DMX channels depends on the assigned mode of operation.



Modes of Operation:

- Creative mode:** Push down dipswitch #1 to 'Off' position to enable. In this mode 1 DMX channel controls each individual gel string. The first DMX channel controls the front string (Yellow-Cyan) and the second DMX channel controls the back string (Yellow-Magenta). In this mode, push up dipswitch #2 to 'On' position for faster scrolling speed.
- Library mode:** Push up dipswitch #1 to 'On' position to enable. This will give you quick access to 100 pre-programmed colours. Enter the percentage value (from 0% to 100%) in the console. Refer to the chart in Section 5.1 of the User Manual to find the colour matches. In this mode, push dipswitch #2 to 'Off' position to select fixed scrolling speed, or push to 'On' position to select variable scrolling speed. Next DMX channel controls the speed.

Note: Easy Colour Chart sheets for both 'Creative' and 'Library' modes are available on the full user manual at the AC Entertainment Technologies website.

Motor Fan Speed:

- High fan speed: Push both dipswitch #3 and #4 to 'Off' position.
- Medium fan speed: Push dipswitch #3 to 'On' position and #4 to 'Off' position; or push dipswitch #3 to 'Off' position and #4 to 'On' position.
- Low fan speed: Push both dipswitch #3 and #4 to 'On' position.

Note:

- Connect and power up colour changer first before turning lights on. The fans must be running to protect gels from premature failure.
- High fan speed is recommended on all lighting fixtures of 750W and above.
- Use of a high quality IR filter medium on ellipsoidal lighting fixtures is strongly recommended, especially those with beam angles of less than 30 degrees.
- Refer to User Manual for instructions on gel string replacement.

Mounting:

Universal mounting plates adjust between 147-275mm/6.8-10.8". The Chroma-Q Cascade is designed to be mounted in an upright position with the base of the unit below the fixture. **Always ensure that the safety wire is connected and in good working condition.**

3. Further Information

Please refer to the Chroma-Q Cascade manual for more detailed information. A copy of the manual can be found at the Chroma-Q website – www.chroma-q.com – under Support.