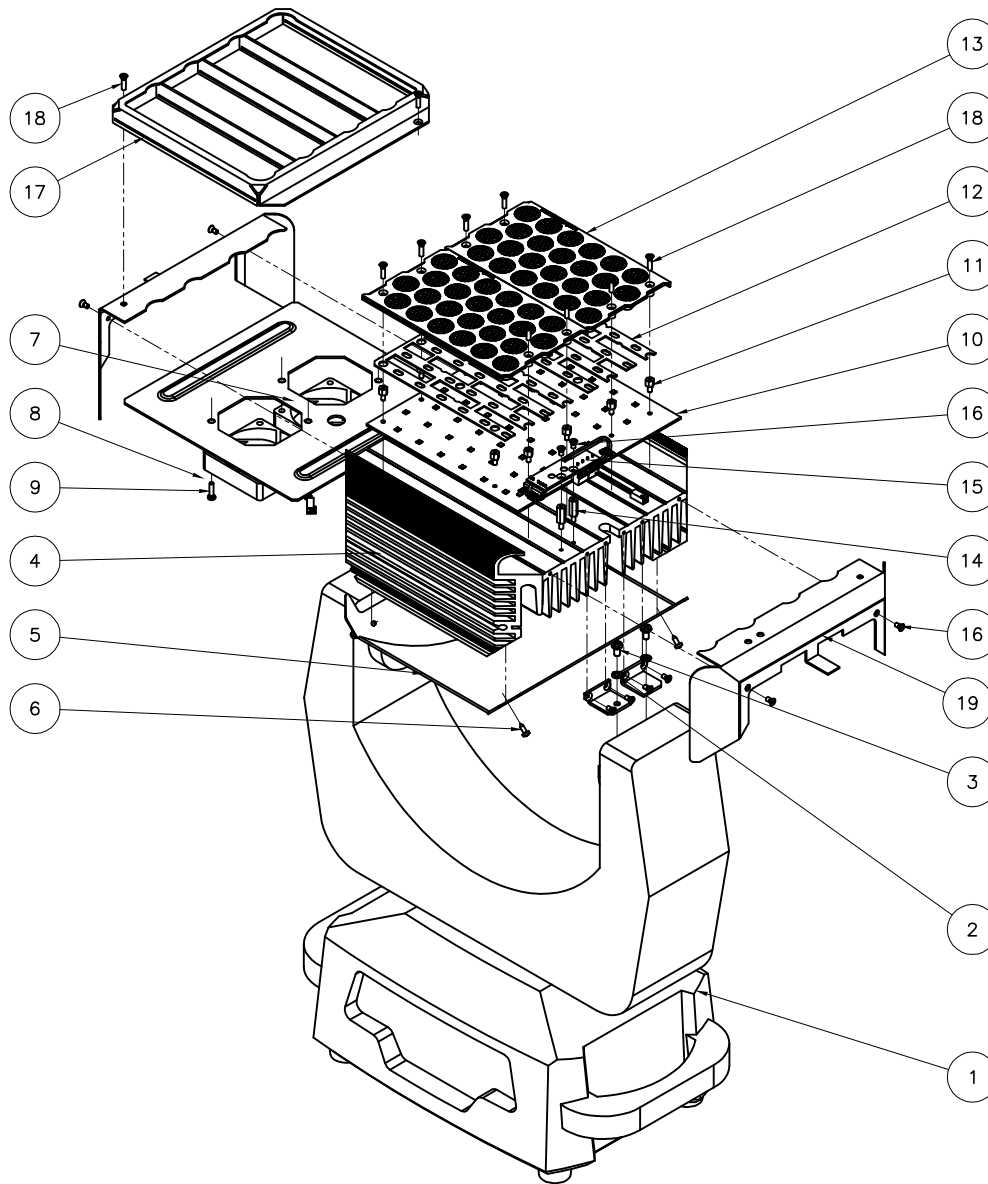


REV B

# AutoLED II Daylight Moving Yoke LED Fixture



**NOTE:**

- 637-9020 KIT PLATES CLOSING AUTOLED II CONSISTS OF MOUNTING PLATES (4x) AND END PLATES (2x)

**DISCLAIMER:** Dimensions and illustrative drawings contained herein are accurate to the company's knowledge at the time of printing, however specifications are subject to change without notice

19	KIT PLATES CLOSING AUTOLED II	637-9020	1
18	SCREW M3x12 FH PLPS BLK	430-1112-0	10
17	EGG CRATE POC XY	637-0010	1
16	SCREW M3x6 FH PLPS Bik	430-1106-0	14
15	PCB COMPLETE INTERCONNECT 637	637-0103	1
14	STDOFF M-F M3x13.5x7, 6mm STUD	430-4114-1	2
13	LENS HOLDER COMPLETE VERY NARROW LENSES	622-0053	2
12	PLATE SPACER PCB-LENSES TRIMMED	637-0503	2
11	STDOFF M3 NUTx5, SCREW M3x6	430-4105-1	10
10	PCB COMPLETE 48 LED'S	637-0102	1
9	SCREW M3x12 PH PLPS Bik	430-1212-0	4
8	FAN ASSY CF12	621-0057	2
7	FAN PLATE 8" DUAL FAN	637-0006	1
6	SCREW SELF TAP PH PLPS BLK ST2.9x9.5 RoHS	429-6210-0	4
5	COVER BACK POC XY	637-0005	1
4	EXTRUSION 8", MACHINED, BLACK ANODIZED	637-0002	1
3	SCREW M4x8 PH PLPS BLK	440-1208-0	4
2	WASHER LOCK M4	440-2876-0	4
1	MOVING YOKE COMPLETE	637-0511	1
ITEM	DESCRIPTION	PART#	QTY
Parts List			