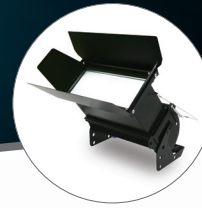




Chroma-Q® Studio Force D12



Extreme Output Daylight White LED Fixture

Utilising the same core technologies as the innovative Chroma-Q™ Color Force™ 12 multi-purpose LED fixture, the new Studio Force™ D 12 is a 6,100K CCT, daylight white version that is specifically designed for TV, film, touring, exhibitions, corporate events and theatre lighting applications. At only 335mm / 1ft* long, the unit is ideal for floor, wall or truss mounting. It also provides an extreme output of 6,635 lumens for evenly washing large areas, complemented by smooth, theatrical grade dimming. A choice of batten lengths are also available.

Extreme Output

With an extreme output of 6,635 lumens, the Studio Force D 12 offers 2.5 times the white light output of its RGBA colour variant. The Studio Force D 12 can also be used to extend Studio Force D 48 and 72 LED batten installations.

Multi-purpose

The Studio Force D 12 is suitable for a wide range of lighting applications, including key-lighting, uplighting, backlighting and wash applications.

Optional accessories include cyc and border light lens, lightbank kit, egg crate louver, top hat, half top hat, barn door, spigot adaptor and diffuser box attachment accessories.

Optional City Theatrical Accessories



Egg crate louver



Top hat



Half top hat



Barn door



Spigot adaptor



Lightbank kit*



Cyc and border light lens



Diffuser box attachment**

Colour

The Studio Force D range includes ColorSure™ technology for enhanced consistency across each light engine and when using multiple fixtures.

Optics & Dimming

The Studio Force D range's camera friendly custom optical design provides a smooth, uniform output, matched by theatrical grade dimming.

Practical & Mechanical

On the outside, the Studio Force D 12 has been designed to provide maximum versatility and ease of use. The built-in power supply, hidden quick release fixings requiring no tools, and PowerCon and 5-pin DMX connections in and out provide fast deployment and simple cable management.

The Studio Force D range also features stand-alone Master and Slave modes for additional usage possibilities, flat end plates for seamless wall-washing and a rugged extruded aluminium body.



Hidden quick release fixings and flat end plates



PowerCon and 5-pin DMX connections in and out

*Measurements may have been rounded, please see specification sheet for full measurements.

Key Features

- 6,100K CCT daylight white
- Extreme output - 6,635 lumens
- Extremely smooth, uniform wash
- Theatrical grade dimming
- Ideal for TV, film, touring, exhibitions, corporate events and theatre
- 335mm / 1ft* length ideal for floor, wall or truss mounting
- Camera friendly
- PowerCon input and output for easy daisy chaining of fixtures
- Broad range of accessories available, including lightbank kit and barn door
- Flat end plates for seamless wall-washing
- Built-in power supply
- Hidden quick release fixings
- Rugged extruded aluminium body



Studio Force D 12 Technical Specification

Product Code	CHSFD12NF
Net Dimensions**	335mm x 190mm x 218mm / 13.2" x 7.5" x 8.6"
Net Weight	4kgs / 9lbs
Shipping Dimensions	432mm x 343mm x 279mm / 17" x 13.5" x 11"
Shipping Weight	6kgs / 13lbs
Power Input Rating	100-240V AC, 50-60 Hz, 160VA
Power Connectors In/Out	PowerCon
Data Connector In/Out	XLR 5-pin
Operating Temperature	0°C to 40°C

Control Protocol	ANSI E1.11 USITT DMX 512-A
Cooling System	Forced - 1 fan
Construction	Black anodised aluminium extrusion
Colour	Black
Built-In Hardware	Quick release lever for tilt adjustment
IP Rating	IP20
Approvals	CISPR 22 :2006/EN55022 :2006 & CISPR 24 :1997/ EN55024 :1998, ICES-003 :2004 & FCC Part 15 Subpart B: 2007

Control & Photometric

LEDs Per Engine	24 Cold White
Control Modes	8 channels Dim8x 2 channels FxDim 2 channels Dim2x 1 channel Dim1x 1 channel Look Select Master Standalone Slave Standalone Manual
Dimming Curve	Theatrical
Variable Effects Engine	Yes
Effects Parameters	Intensity Effects

Hot Lumen Output	White 6,635 hot lumens
Optics	Specialised close focus lens
Beam Angle	~23°
With Optional Cyc Optic	80 x 30° (approx.)
With Optional Border Optic	60° (approx.)
Beam Distribution	Asymmetrical direct illumination
CCT	6,100K (+/- 200K)
Colour Gamut	Performance enhanced
CRI	>70
Lamp Life	L70 at 50,000 hours

Accessories

CHCFCL12	Cyc Lens For Force 12
CHCFBL12	Border Light Lens For Force 12
CHCFSA12	Spigot Adaptor For Force 12
CHCFECL12	Egg Crate Louver For Force 12
CHCFTH12	Top Hat For Force 12
CHCFH12	Half Top Hat For Force 12

CHCFBD12	Barn Door For Force 12
CHCFDBX	Diffuser Box For Force 12
CHCFLBA12	Lightbank Adaptor (Speedring) For Force 12
CHCFLB12	Lightbank For Force 12
CHCFBK-K	Lightbank Kit* For Force 12 (consists of Lightbank Adaptor (Speedring) & Lightbank)

**Barn door and lens shown are sold as separate accessories. Fixture not included

*The Lightbank Kit consists of the Lightbank Adaptor (Speedring) & Lightbank. Both items can also be purchased separately. Fixture not included

Studio Force D Range

All three Studio Force D models are also available as Studio Force V 3,000K - 6,100K CCT variable white versions.

For the latest news and information on the Chroma-Q range, visit www.chroma-q.com